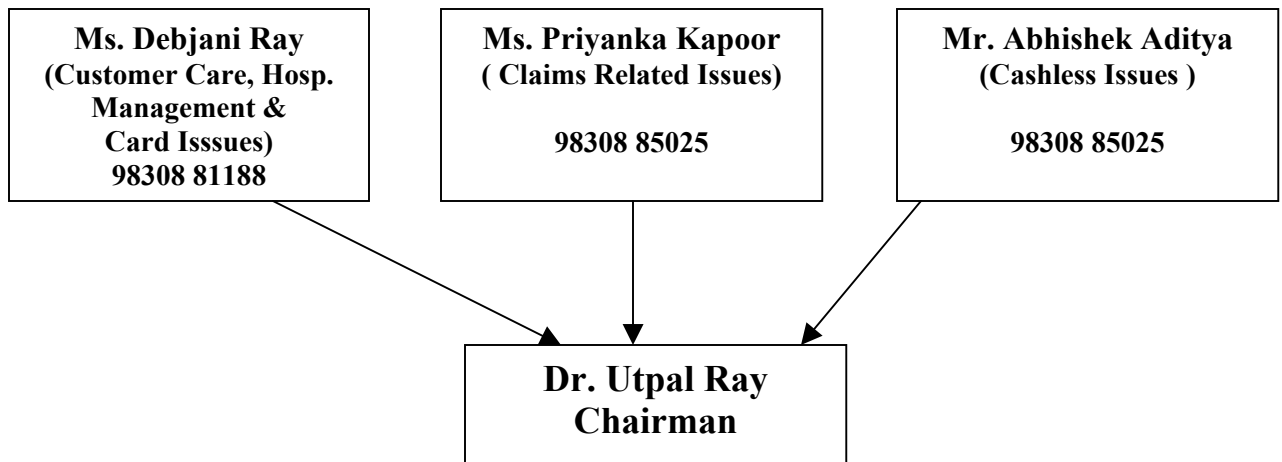


Escalation Matrix- Medicare TPA

For any queries pertaining to emergency / planned hospitalization, status of Reimbursement Claim, non receipt of membership card, lost of membership card, details of empanelled hospital etc, the **local Medicare office** should be contacted (List of Medicare presence Pan India is attached).

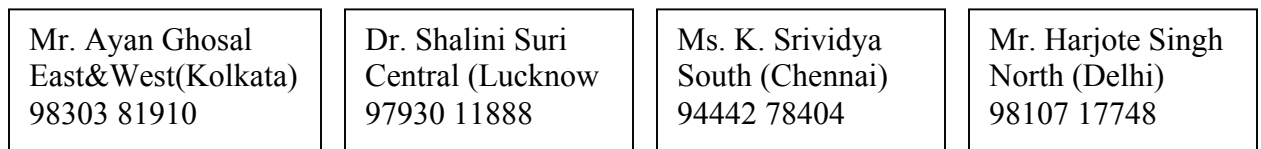


Medicare TPA (Corporate Office - KOLKATA)



Escalation matrix of Bajaj Allianz Health Insurance Vertical

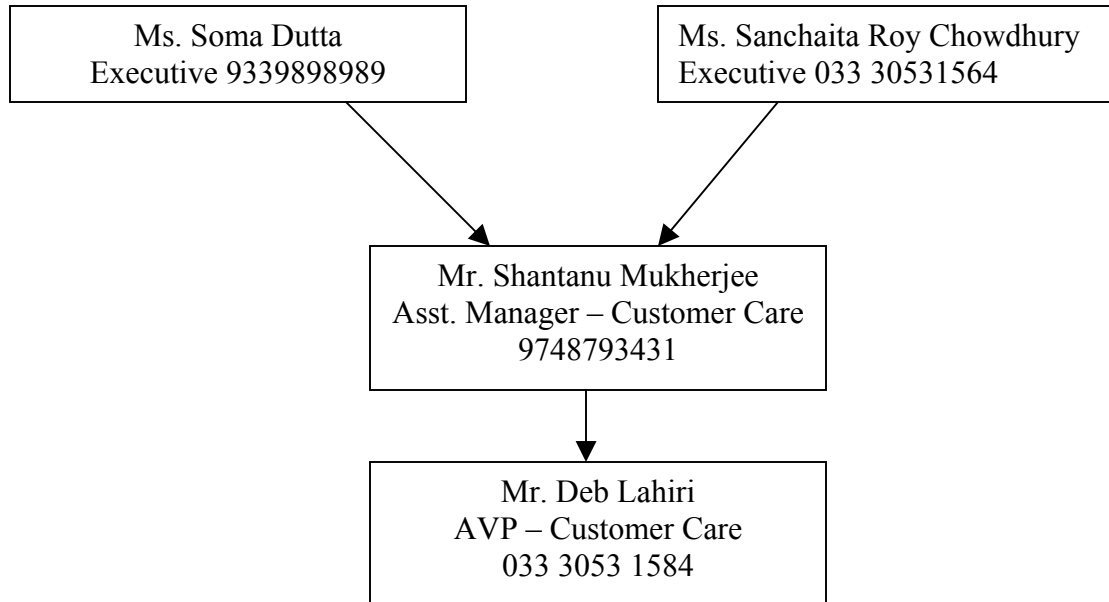
Zonal Coordinators



(Zonal Offices)

Contd...

Health Insurance Channel –Customer Care Department
Corporate Office Kolkata.



HELPLINE NUMBERS

FOR 24X7 ASSISTANCE

General Queries : + 91 9339898989 Cashless/Claim Queries : + 91 9836452520

Emergency Hospitalisation : 1800-345-1234